



ni.com/first

1



What's new for FRC LabVIEW 2012

- Thumb Drive Installer
- Based on LabVIEW 2011
- Supports NI cRIO-FRC II
- Faster RT deployment
- Driver Station VIs
- Camera VIs
- Compressor VIs
- Getting Started Window
- cRIO Imaging Tool
- Axis Camera Setup Tool
- Driver Station
- Dashboard
- Examples
- Tutorials



NI Software on a Thumb Drive

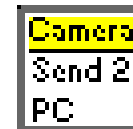
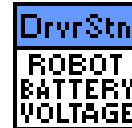


- NI LabVIEW for FRC installs from a thumb drive
- Extra 3.5 GB partition for team use

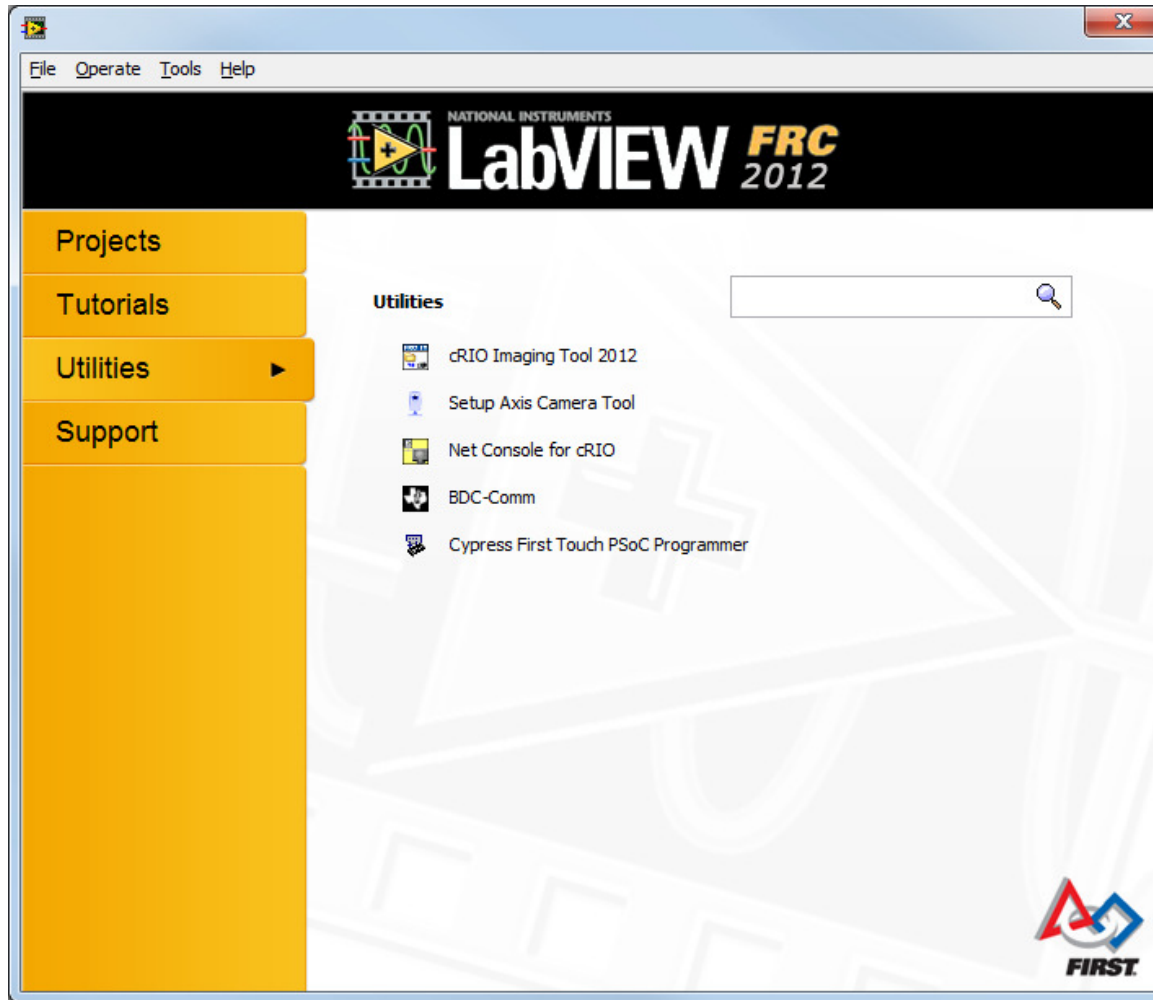


New Palette VIs

- Get Robot Battery Voltage
- Report Robot Code State
- Kinect VIs
- Camera Loop VIs
- Compressor Loop VI

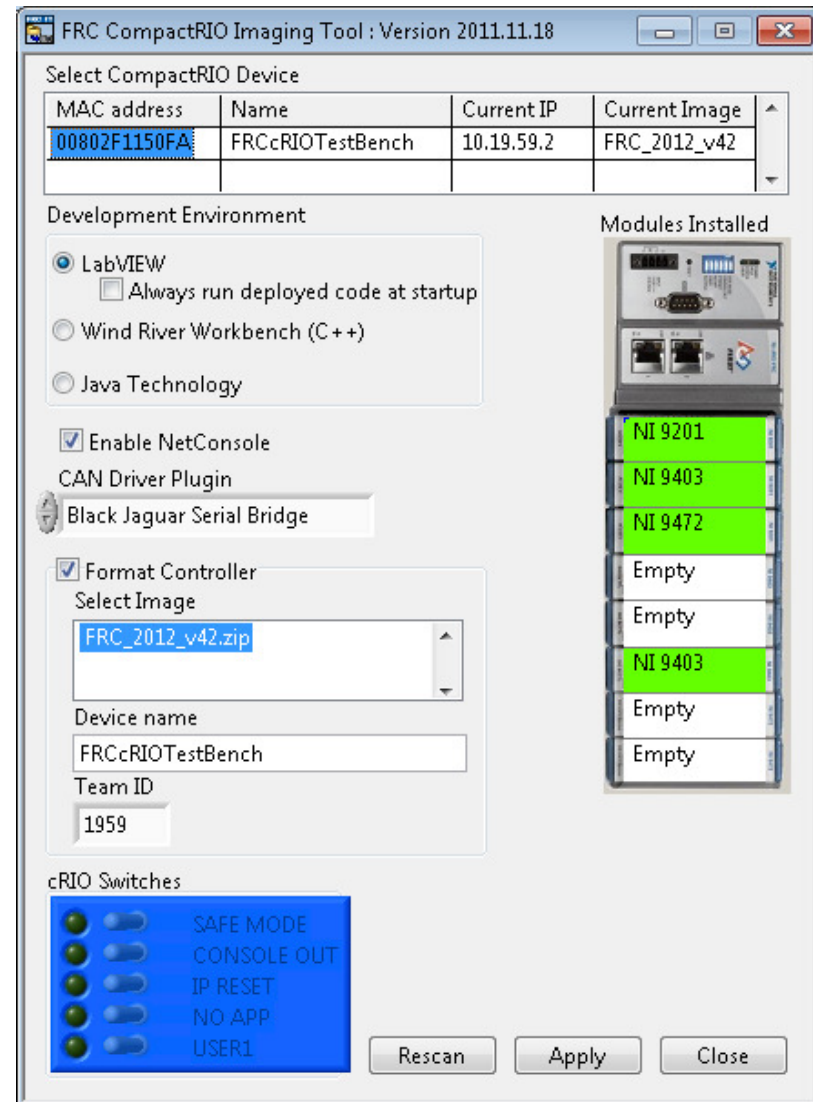


Getting Started Window – Utilities Page



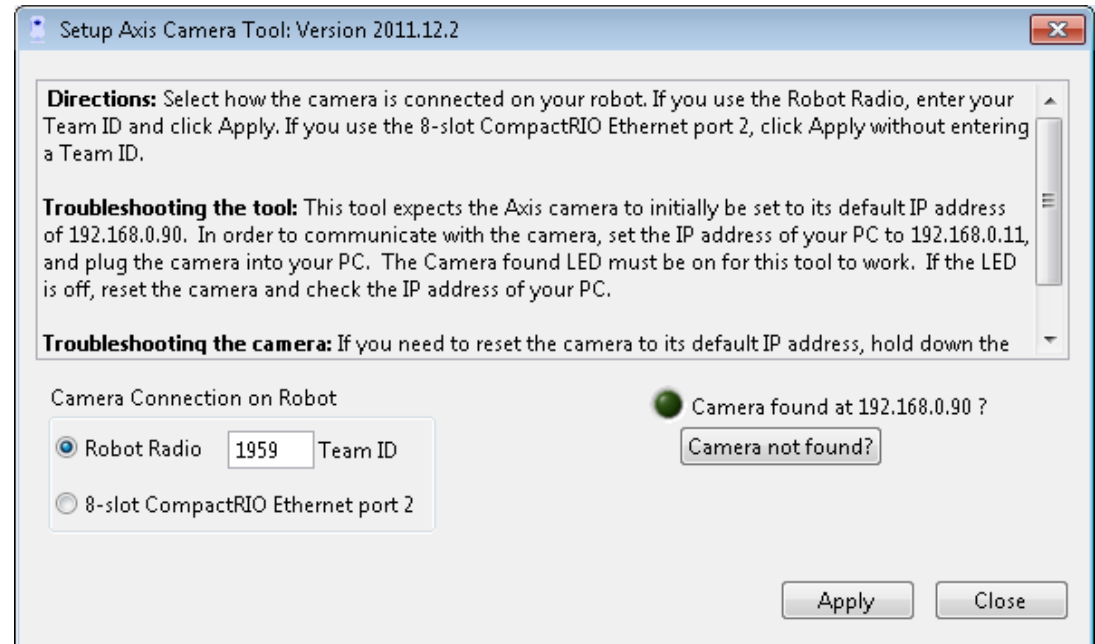
cRIO Imaging Tool

- Works for both:
 - NI cRIO-FRC
 - NI cRIO-FRC II
- Same image for both
- Shows installed modules
- cRIO switches:
 - Read NI cRIO-FRC
 - Read/Write NI cRIO-FRC II

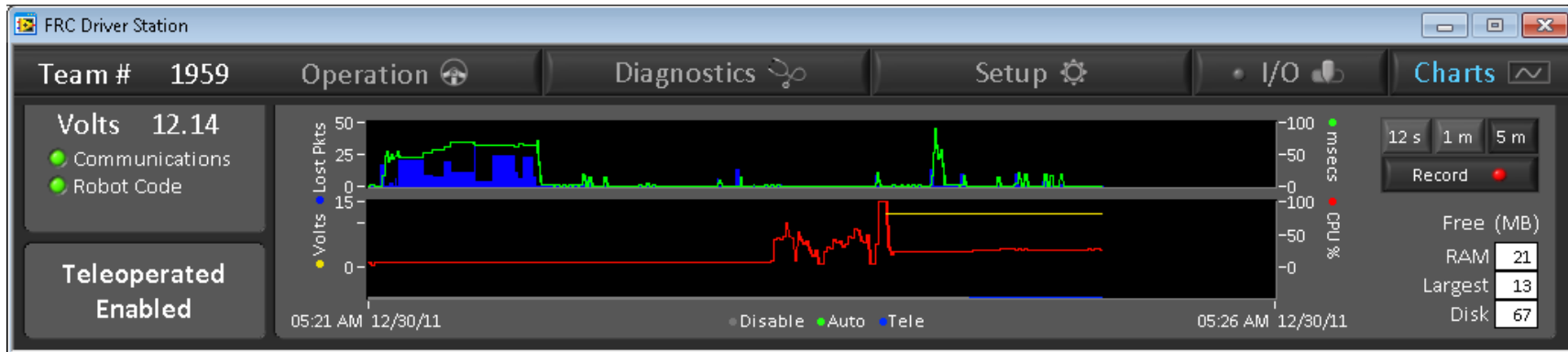


Axis Camera Setup Tool

- Connection choice
- Directions
- Troubleshooting



Driver Station



- Charts tab – performance and logging
- Log Viewer – C:\Program Files\FRC Driver Station
 - Driver Station Log File Viewer.exe
- Kinect Status
- Space bar = E-Stop



Dashboard



- Kinect Skeleton Tab – displays skeleton image
- Camera Image Tab – now uses mjpeg file type



New Examples

- EZ1 MB1010 Sonar – Analog
- EZ1 MB1010 Sonar – Digital
- CAN Motor
- CAN Speed Control
- CAN Tank Drive
- CAN Position Control
- CAN Current Control



Tutorials

- Set up cRIO
- Set up Axis Camera
- Set up Robot Radio
- Develop Robot Project
- Editing Team Code
- Custom Dashboard
- Integrating Examples
- **Integrating Vision**
- **CAN Jaguar**

